

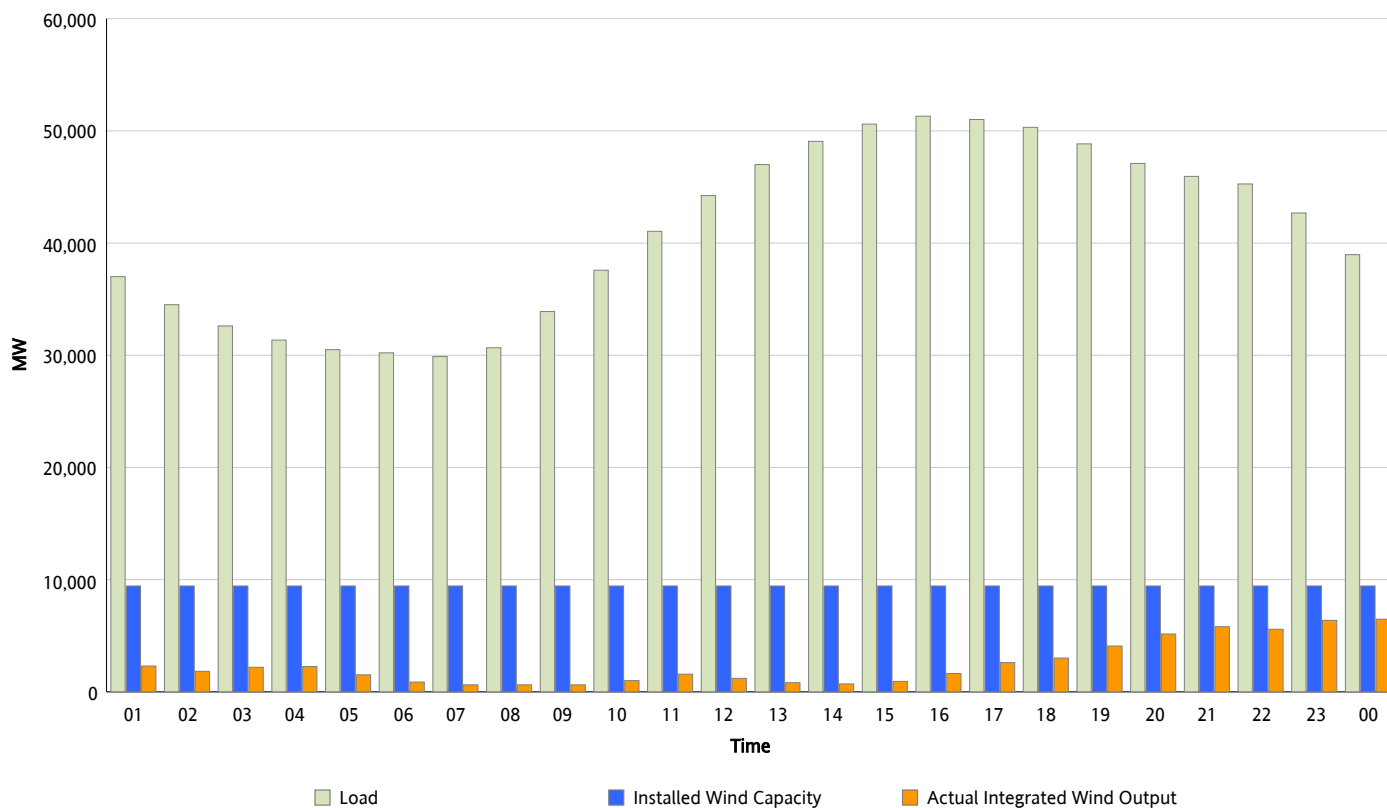


ERCOT Grid Operations

Wind Integration Report : 06/17/2012

Peak Load	51,311 MW
Load Peak Hour (HE)	16
Wind Over Peak	1,640 MW
Wind Record 04/13/12	7,925 MW
Max Wind Value*	6,641 MW
Wind Peak Time	23:13
Wind Integration %	16.61 %

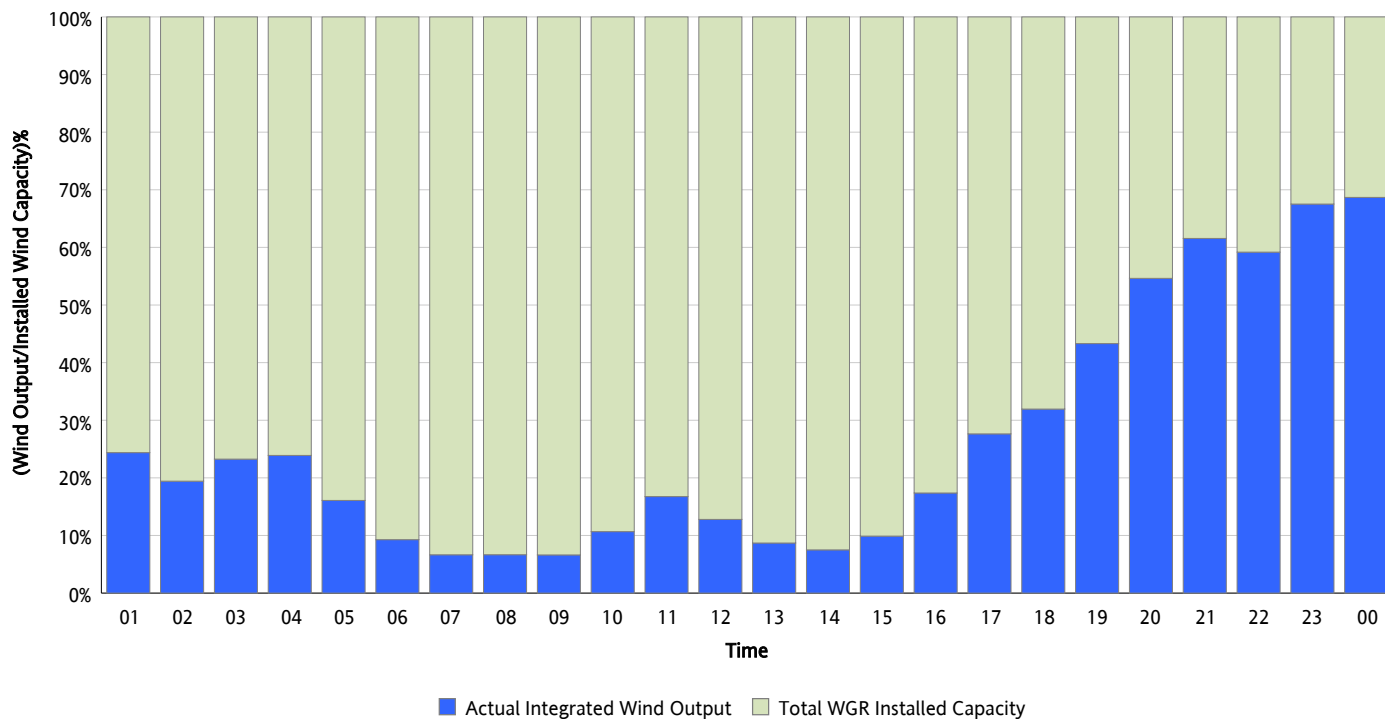
Hourly Average Actual Load vs. Actual Wind Output
06/17/2012



* Wind Record and Wind Max represent instantaneous values and the rest of the values are integrated over the hour

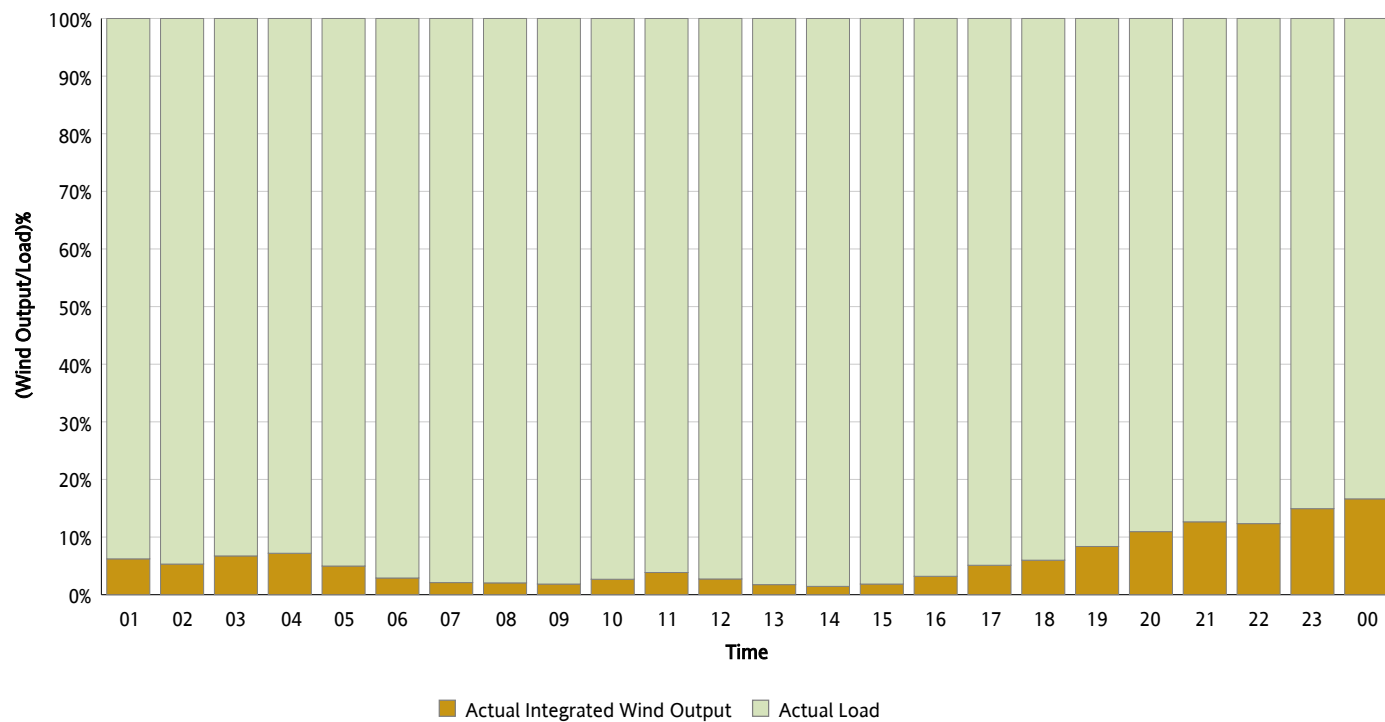
Actual Wind Output as a Percentage of the Total Installed Wind Capacity

06/17/2012



Actual Wind Output as a Percentage of the ERCOT Load

06/17/2012



ERCOT Load vs. Actual Wind Output

06/10/2012 - 06/17/2012

